



# *Software Requirements Testing Guide*



# Requirements Checklist

**Connectivity:** Internet Connection - each machine should receive it's local IP address via DHCP

**Operating System:** WindowsXP - Win7 (32-bit or 64-bit)

**Browser:** IE (Internet Explorer), Firefox or Chrome – 32-bit

- JavaScript must be enabled
- Downloading of PDF files must be permitted

**Browser Plugins:**

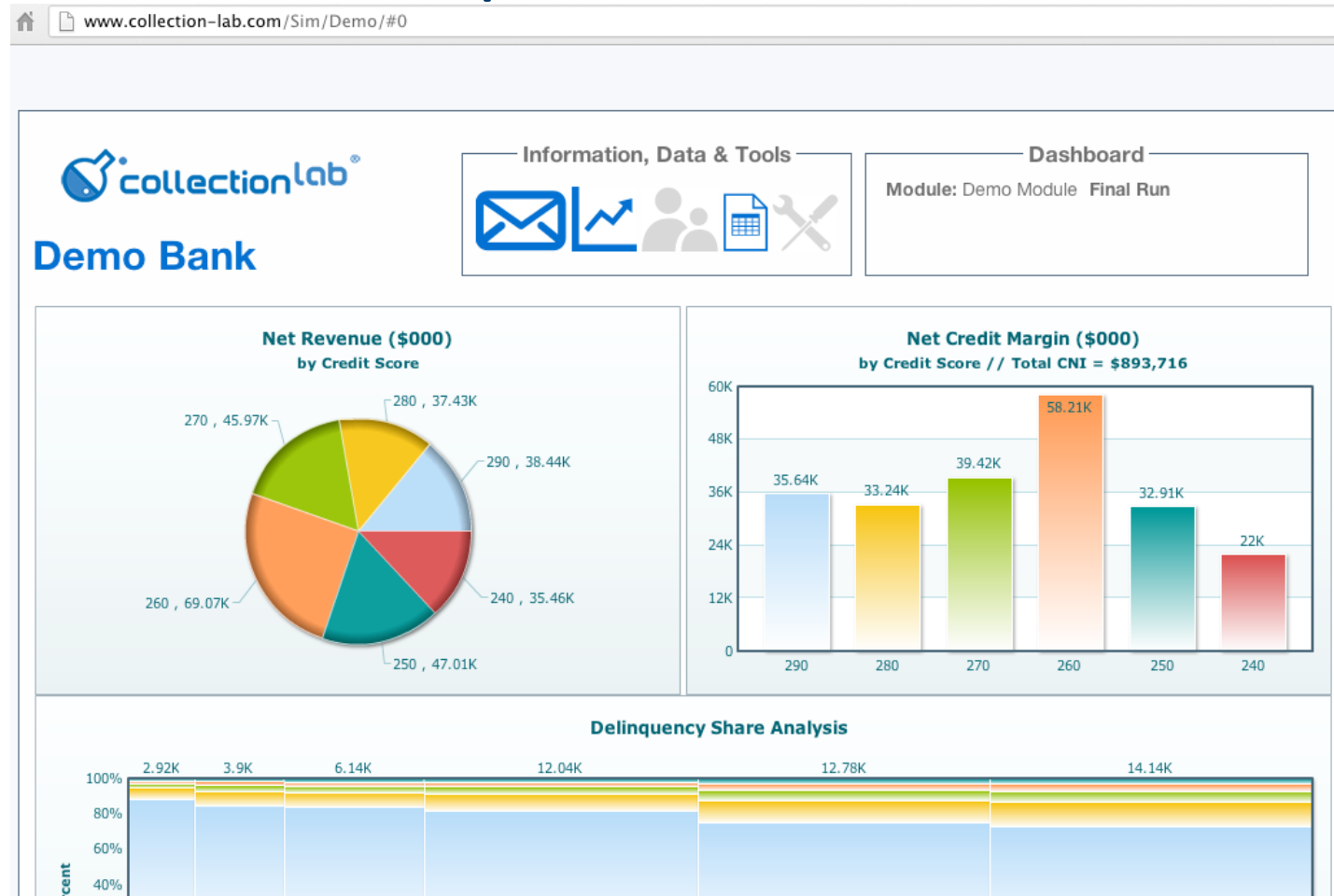
- Acrobat Reader (or other PDF reader) enabled in browser (Scene Setting documents)
- Adobe Flash browser plugin enabled in browser (for charts and graphs)

**Desktop:** MS Office Excel or Open Office spreadsheet viewer

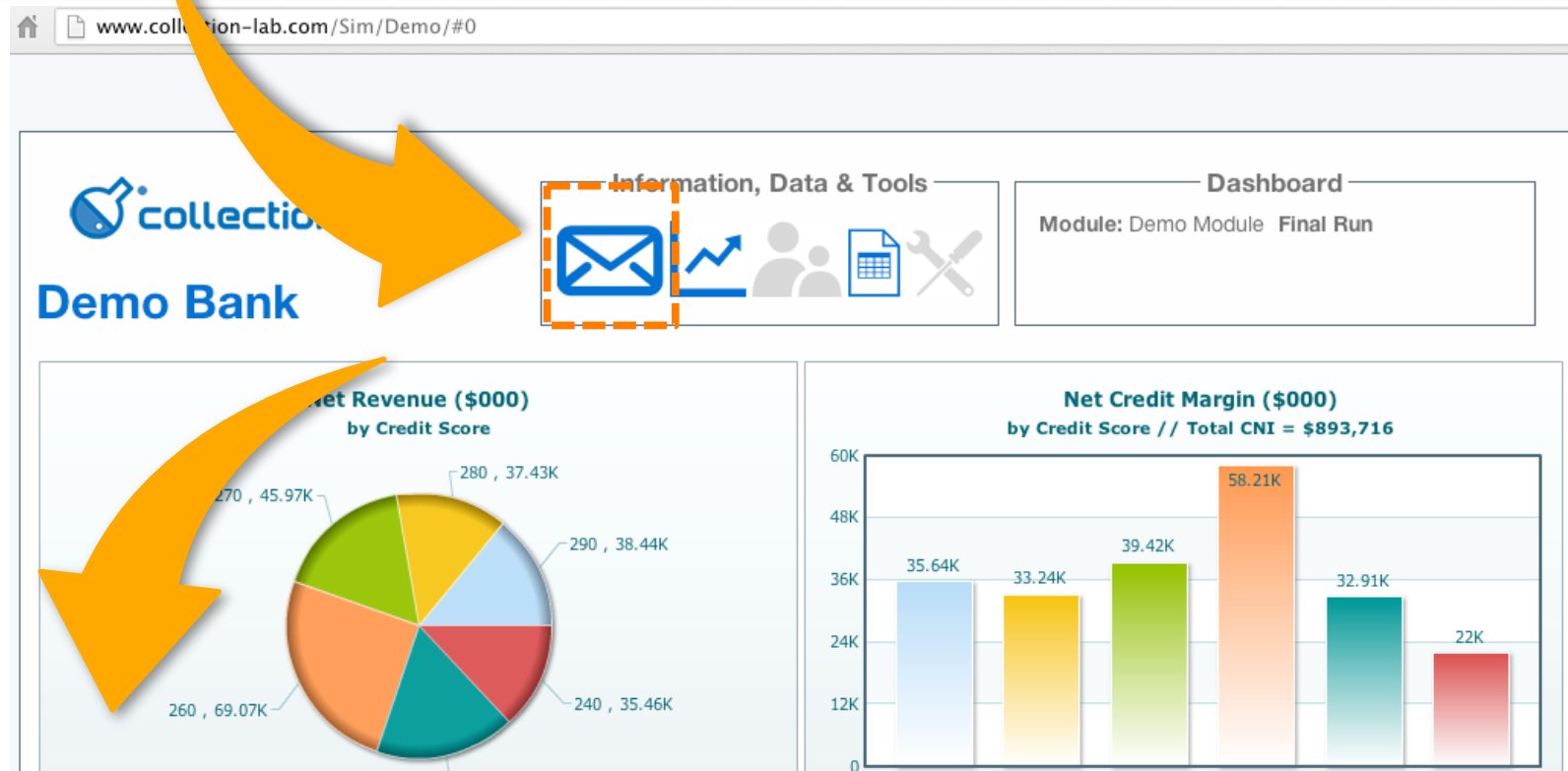


Go To <http://www.collection-lab.com/Sim/Demo/>

Use Internet Explorer, Chrome or Firefox

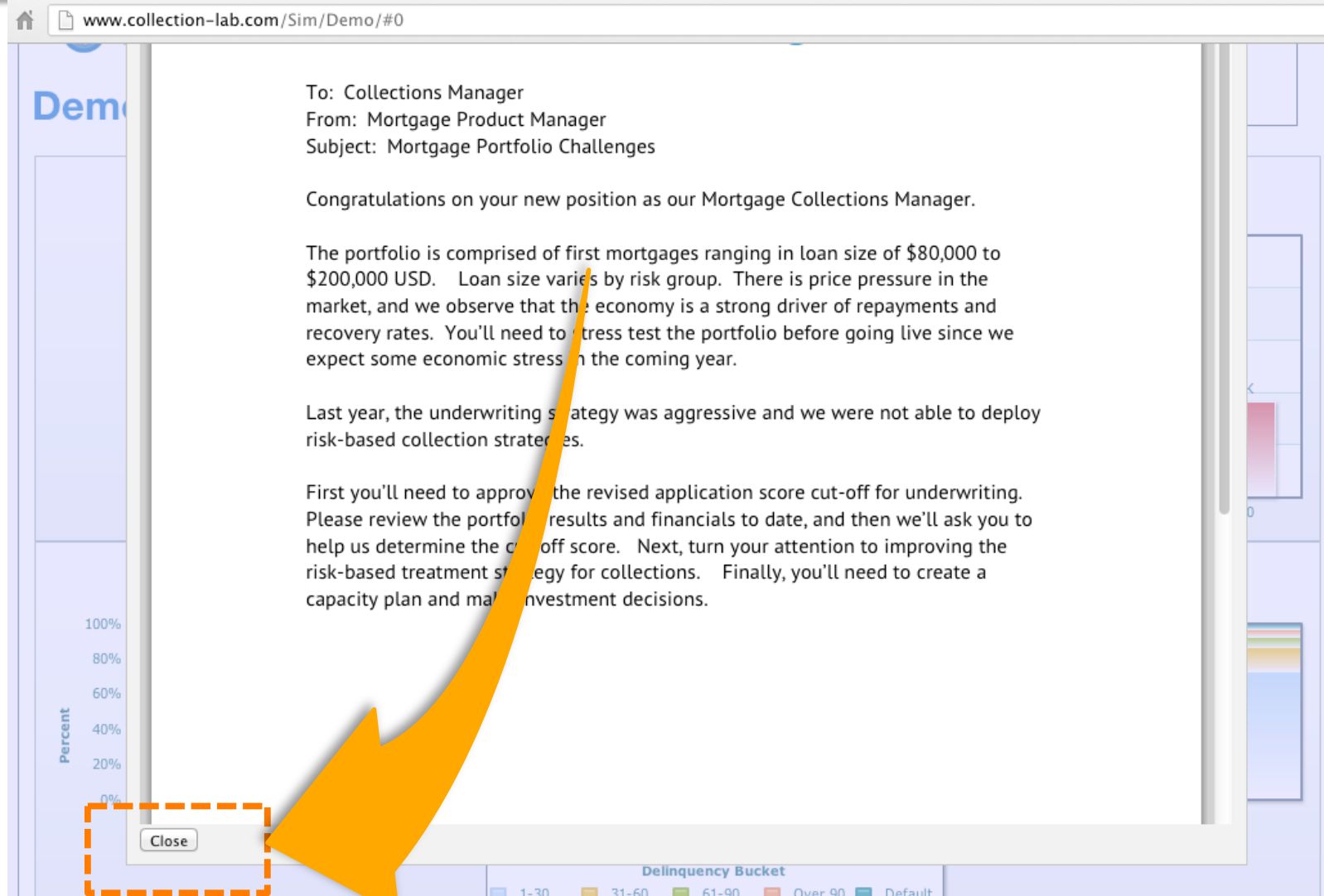


# Test 1: Open a document from the icons

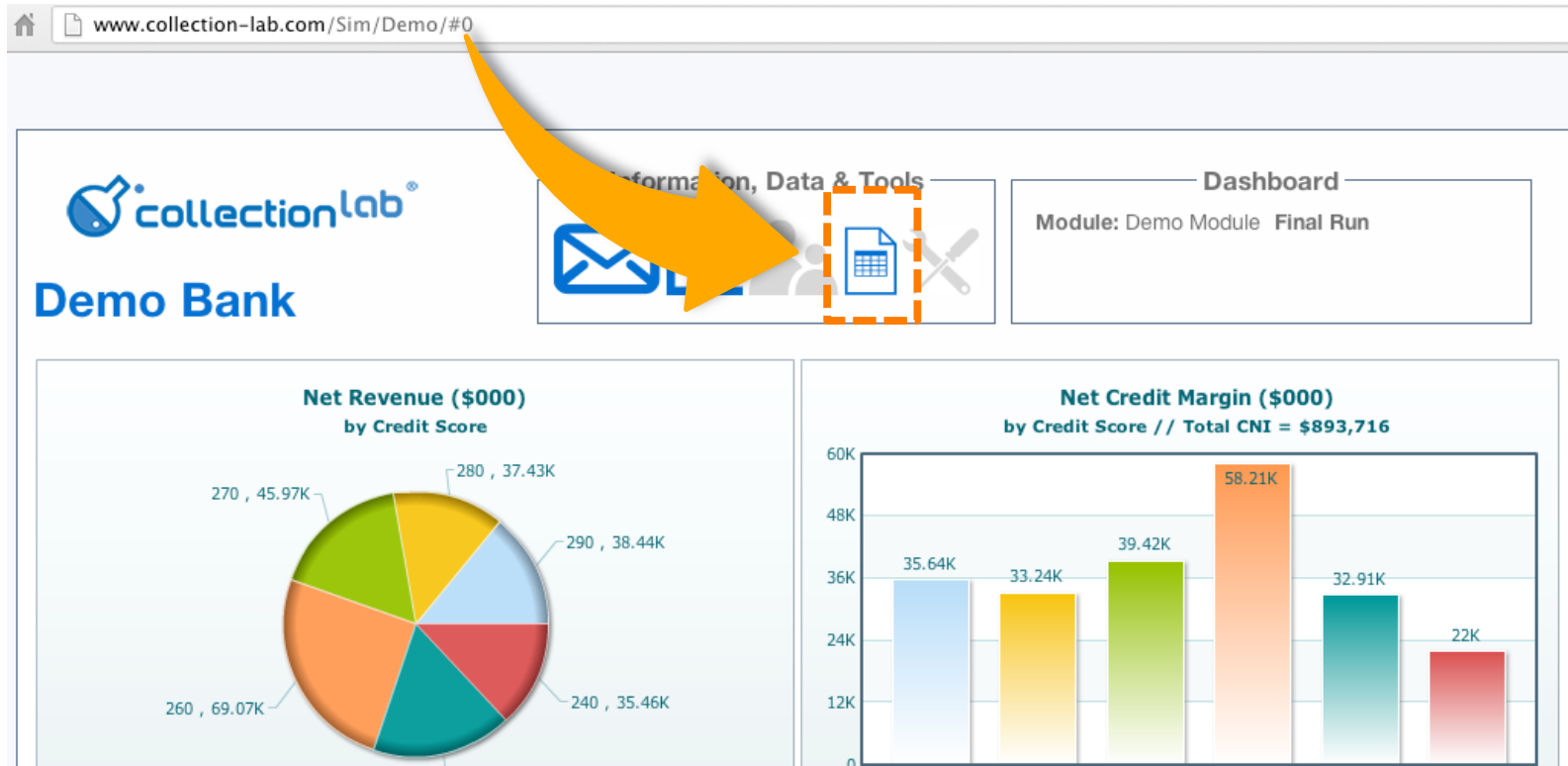


If you cannot view the document, enable PDF using these instructions:  
<http://helpx.adobe.com/acrobat/using/display-pdf-browser-acrobat-xi.html>

# Scroll to the bottom to find the “close” button



## Test 2: Open the Tabular Results




If you cannot open or download the excel file, check that downloading is enabled: <http://support.microsoft.com/kb/883255>

## Test 2: Download the Excel File

Tabular Results

www.collection-lab.com/Sim/Demo/TabularResults.aspx

Refresh

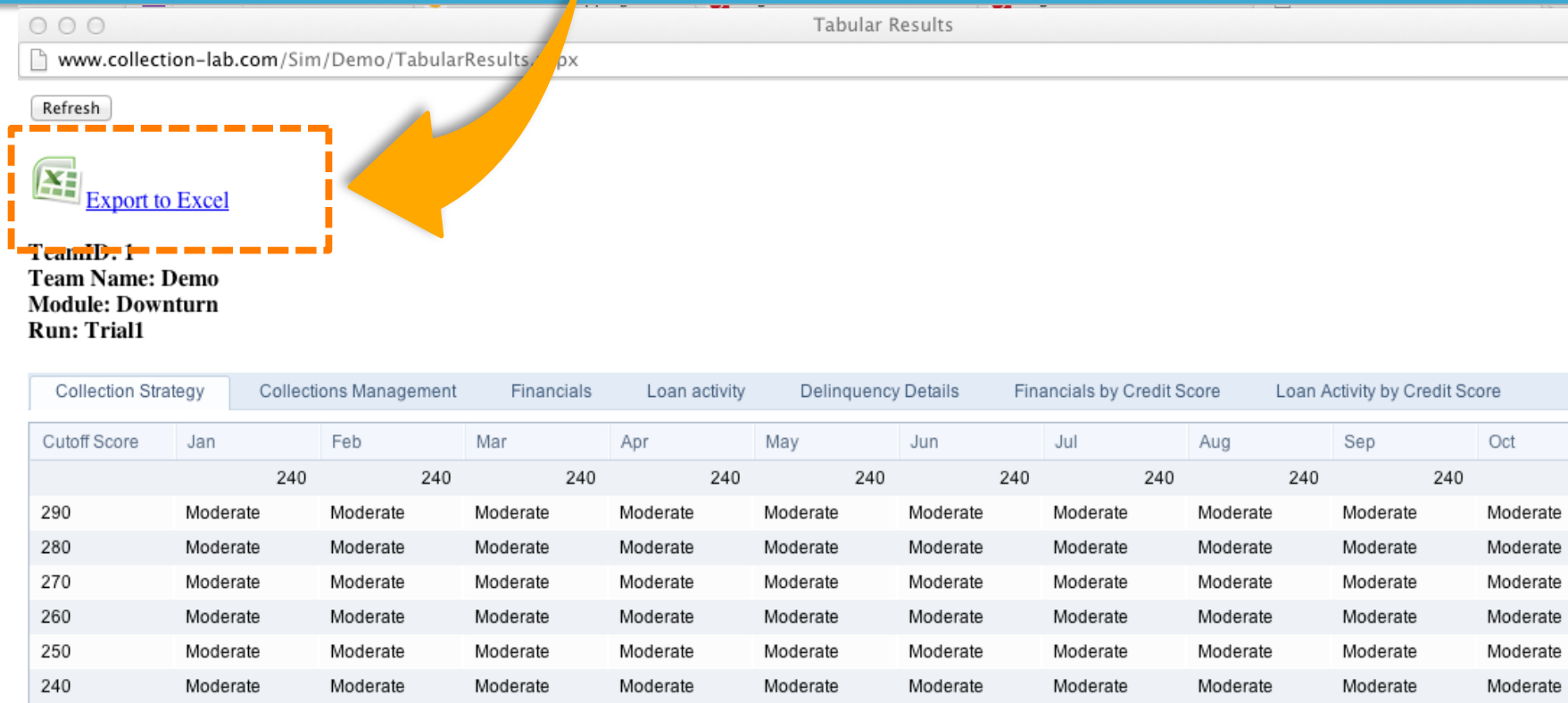
 [Export to Excel](#)

**Team B-1**  
**Team Name: Demo**  
**Module: Downturn**  
**Run: Trial1**

Collection Strategy	Collections Management	Financials	Loan activity	Delinquency Details	Financials by Credit Score	Loan Activity by Credit Score				
Cutoff Score	Jan	Feb	Mar	Apr	May	Jun	Jul	Aug	Sep	Oct
	240	240	240	240	240	240	240	240	240	240
290	Moderate	Moderate	Moderate	Moderate	Moderate	Moderate	Moderate	Moderate	Moderate	Moderate
280	Moderate	Moderate	Moderate	Moderate	Moderate	Moderate	Moderate	Moderate	Moderate	Moderate
270	Moderate	Moderate	Moderate	Moderate	Moderate	Moderate	Moderate	Moderate	Moderate	Moderate
260	Moderate	Moderate	Moderate	Moderate	Moderate	Moderate	Moderate	Moderate	Moderate	Moderate
250	Moderate	Moderate	Moderate	Moderate	Moderate	Moderate	Moderate	Moderate	Moderate	Moderate
240	Moderate	Moderate	Moderate	Moderate	Moderate	Moderate	Moderate	Moderate	Moderate	Moderate

*If you cannot download the excel file, check that downloading is enabled: <http://support.microsoft.com/kb/883255>*


# Test 3: Open, Edit and Resave Excel File



Tabular Results

www.collection-lab.com/Sim/Demo/TabularResults.aspx

Refresh

 [Export to Excel](#)

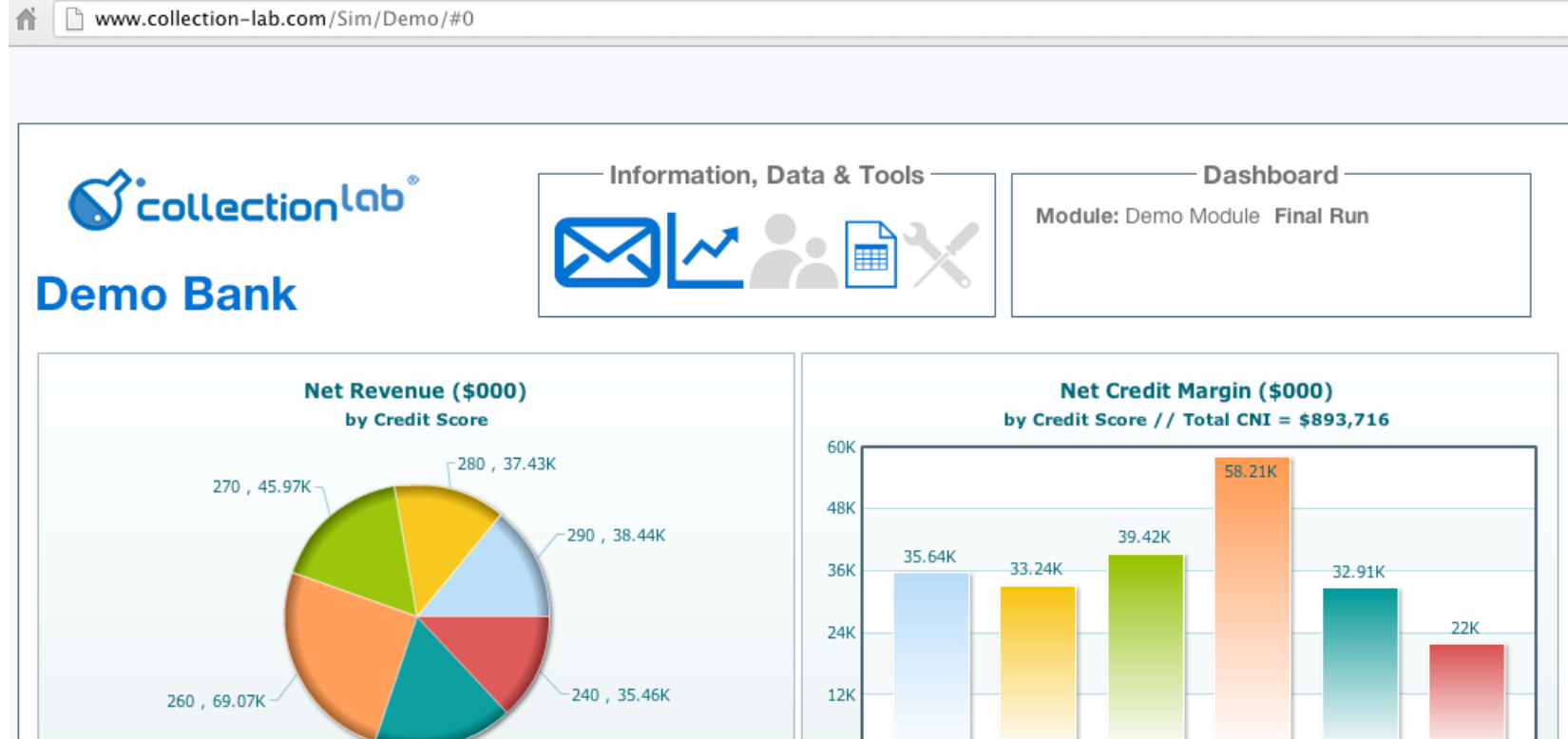
**TeamID: 1**  
**Team Name: Demo**  
**Module: Downturn**  
**Run: Trial1**

Collection Strategy	Collections Management	Financials	Loan activity	Delinquency Details	Financials by Credit Score	Loan Activity by Credit Score				
Cutoff Score	Jan	Feb	Mar	Apr	May	Jun	Jul	Aug	Sep	Oct
240	240	240	240	240	240	240	240	240	240	240
290	Moderate	Moderate	Moderate	Moderate	Moderate	Moderate	Moderate	Moderate	Moderate	Moderate
280	Moderate	Moderate	Moderate	Moderate	Moderate	Moderate	Moderate	Moderate	Moderate	Moderate
270	Moderate	Moderate	Moderate	Moderate	Moderate	Moderate	Moderate	Moderate	Moderate	Moderate
260	Moderate	Moderate	Moderate	Moderate	Moderate	Moderate	Moderate	Moderate	Moderate	Moderate
250	Moderate	Moderate	Moderate	Moderate	Moderate	Moderate	Moderate	Moderate	Moderate	Moderate
240	Moderate	Moderate	Moderate	Moderate	Moderate	Moderate	Moderate	Moderate	Moderate	Moderate

*If you cannot open, edit and resave the excel file, check your Excel or spreadsheet viewer installation and license.*



# Test 4: Check that graphs load



*If graphs don't load, enable javascript using these instructions:*  
<http://www.enable-javascript.com/>

